



OFFERS IN EXCESS OF

**£900,000**

**Esther Mews**

, BR1 3FF



## PROPERTY SUMMARY

Sinclair Hammelton are proud to bring to the market this stunning five bedroom property which has recently been fully redecorated and offers beautifully presented accommodation throughout. The ground floor features a spacious lounge and a fully fitted kitchen/diner equipped with a range of high-quality integrated appliances. Across the upper three levels are five well-proportioned bedrooms, including two with modern en-suite bathrooms, alongside a contemporary family bathroom and an additional downstairs WC. Outside, the property benefits from a landscaped rear garden and allocated parking. Esther Mews is a secluded, private gated development perfectly positioned for excellent transport links, including Bromley North and Bromley South stations.

EPC: C

Freehold  
COUNCIL TAX - F  
Construction -  
Mains Services -  
Heating System -

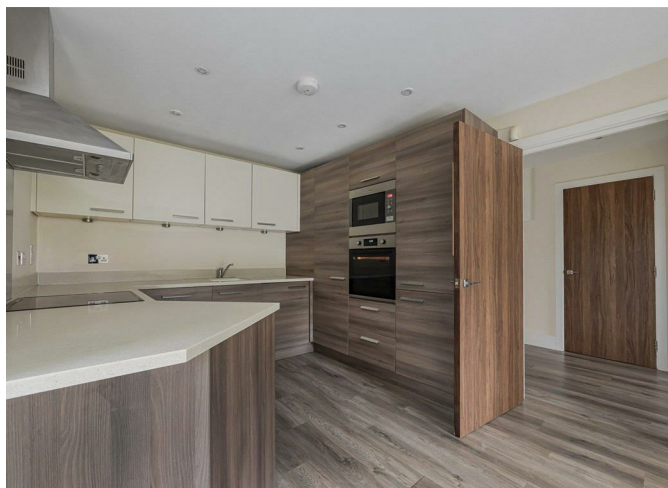
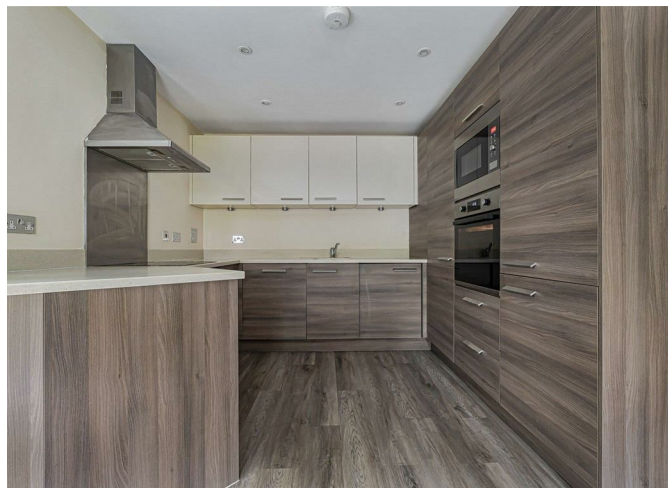
5



3



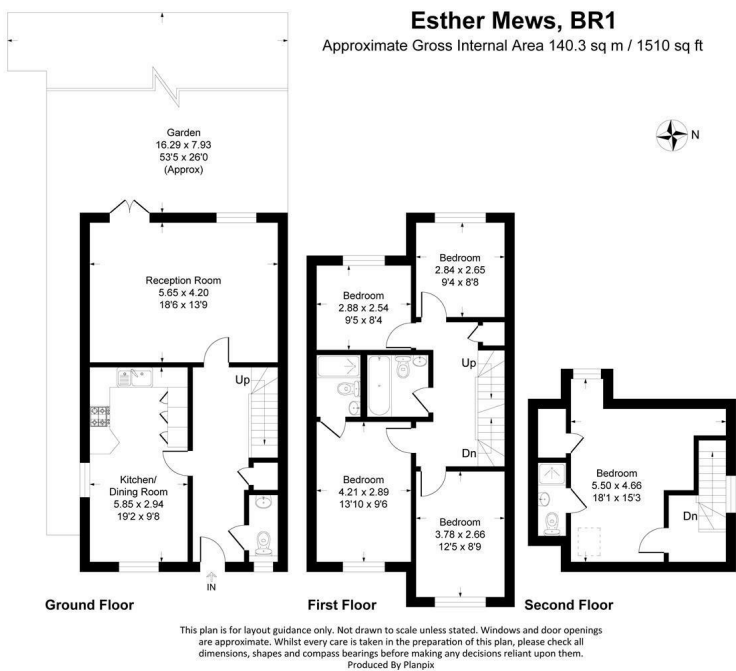
0











5

3

0

Energy Efficiency Rating		
	Current	Potential
Very energy efficient - lower running costs		
(92 plus) A		
(81-91) B		
(69-80) C	79	88
(55-68) D		
(39-54) E		
(21-38) F		
(1-20) G		
Not energy efficient - higher running costs		
England & Wales <span style="float: right;">EU Directive 2002/91/EC</span>		

**EPC RATING: C    COUNCIL TAX BAND:**

Agents Note: Whilst every care has been taken to prepare these particulars, they are for guidance purposes only. All measurements are approximate and are for general guidance purposes only and whilst every care has been taken to ensure their accuracy, they should not be relied upon and potential buyers/tenants are advised to recheck the measurements

**OFFICE ADDRESS**

23 High Street  
Bromley  
Kent  
BR1 1LG

**OFFICE DETAILS**

0208 464 5566  
info@sinclairhammelton.co.uk